

Please be sure to read the enclosed Shark® instructions prior to using your unit.

Shark®

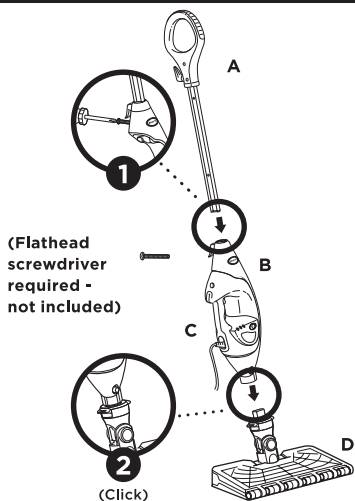
FLOOR AND HANDHELD STEAM CLEANER

QUICK START GUIDE

WHAT'S INSIDE

- | | |
|--|--|
| A Steam Mop Handle | I Small Above-Floor Pocket Tool and Pad (Certain Models Only) |
| B Steam Mop Body | J Steam Blast Scrubbing (Certain Models Only) |
| C Removable Handheld Steamer | K Copper Brush (Certain Models Only) |
| D Intelli-Mop™ Head | L Nylon Brush (Certain Models Only) |
| E Dirt Grip™ Pad (x2) | M Carpet Glider (Certain Models Only) |
| F Filling Flask | N Steam Crevice tool (Certain Models Only) |
| G Accessory Hose | |
| H Garment Steamer (Certain Models Only) | |

ASSEMBLY



- 1 Screw the mop handle into the Steam Mop body (screwdriver not included).
- 2 Slide the Intelli-Mop™ Head connector into the Steam Mop body. Push until you hear it click securely into place.

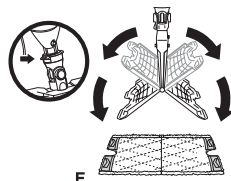
FILLING THE WATER TANK

- 1 Open the water tank cap.
- 2 Use the filling flask to pour water into the tank. Do not overfill. Replace the cap on the water tank.

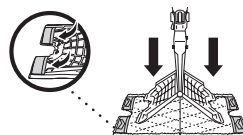


KLIK N' FLIP® MOP HEAD TECHNOLOGY

- 1 Lift the mop straight up by the handle until the Mop Head is hanging straight down. Center the Mop Head above the pad. Press the release button on the back of the mop body, and both sides of the mop head will drop open.



- 2 Slip the mop head's 4 corner tabs into the 4 corner pockets of the Dirt Grip™ Pad.



- 3 Gently press the Mop Head to the floor on one side of the pad, and that side will click into place.

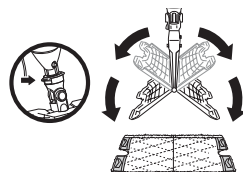


- 4 Flip the other side of the head over onto the floor to click into place.



REMOVING THE PAD

- Lift the mop straight up by the handle until the Mop Head is hanging straight down. Press the pad release button, and both sides of the head will drop open, releasing the pad.

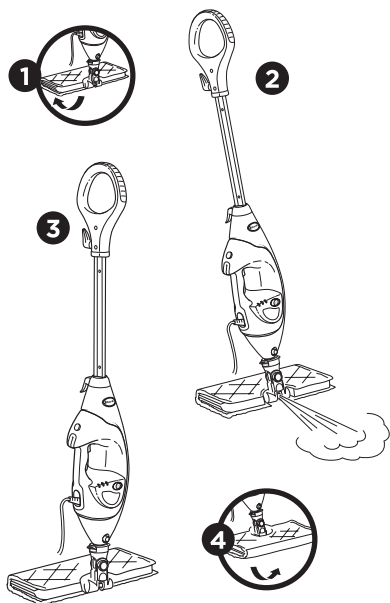


CAUTION: It is recommended that you allow the pads to cool off before removing them from the mophead or accessories to avoid possible scalding injury.

STEAM BLASTER™ TECHNOLOGY

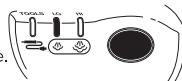
When you need an extra burst of steam to clean tough, dried messes and stuck-on stains, use the Steam Blaster.

- 1 Flip the Mop Head over so that it is behind the mop body.
- 2 Tilt the mop handle back. This will cause the Steam Blaster to emit a concentrated blast of steam onto the floor.
- 3 To stop the Steam Blaster™ spray, simply tilt the mop handle forward.
- 4 Flip the Mop Head back into its original position and continue cleaning.



CLEANING

- 1 Plug the power cord into electrical socket. The **STEAM CONTROL** button will flash blue.
- 2 Press the **STEAM CONTROL** button to select your steam setting: once for **LO**, twice for **HI**, and three times to place the unit in **STANDBY MODE**.



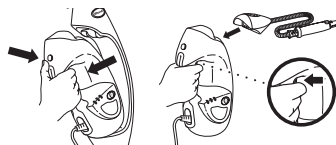
INTELLIGENT STEAM CONTROL®

| SETTING | IDEAL FOR THESE SEALED SURFACES | RECOMMENDED USAGE |
|------------------|-------------------------------------|---|
| Tools | Laminate Hardwood Marble | Light cleaning and dusting Loosening and lifting light dirt. |
| LO | Hardwood Marble Tile Stone | Cleaning most sealed surfaces and large areas. Basic everyday cleaning. Removing spots and smaller messes. Cleaning moderate and heavy-traffic areas. |
| HI | Hardwood Marble Tile Stone | Deep cleaning and cleaning hard-to-clean surfaces. Tough cleaning and removing stuck-on messes and stains. Deep cleaning heavy-traffic areas. Cutting through heavy dirt and grime. |

ABOVE-FLOOR CLEANING

Remove the Handheld Steamer by pressing the release button and removing it from the cradle.

Snap the desired accessory into the main nozzle of the Handheld Steamer. Squeeze the steam trigger to activate steam.



Once finished with handheld steaming, press the **STEAM CONTROL** button until the light flashes blue to put the unit in **STANDBY MODE**. Leave to cool down for 2 to 3 minutes before removing mop head, pads, or handheld accessories and storing.

(Note: **Tools** mode is only available when using the Handheld Steamer. When the Handheld Steamer is removed from the cradle, it will automatically go into **Tools** mode.)

ABOVE-FLOOR CLEANING ACCESSORIES

| ACCESSORIES | USE | HOW TO ATTACH |
|--|---|---|
| G ACCESSORY HOSE | For spot cleaning and direct steaming. | Slide Accessory Hose onto the Handheld Steamer. |
| I SMALL ABOVE FLOOR POCKET TOOL AND PAD (CERTAIN MODELS ONLY) | Ideal for small, uneven surfaces. The pointed tip is great for edges and corners. | Slide the pad onto the Small Above-Floor Pocket Tool so it fits snugly. Attach the elastic band and slide the locking toggle to tighten. Connect the tool to the Accessory Hose by pushing firmly until it clicks into place, then attach the Accessory Hose onto the Handheld Steamer. |

For questions or to register your product, contact us at: 0800 862 0453 or visit us online at sharkclean.eu

@sharkcleaninguk

@sharkcleanuk

@sharkcleanuk