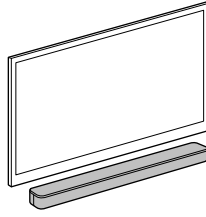


Startup Guide

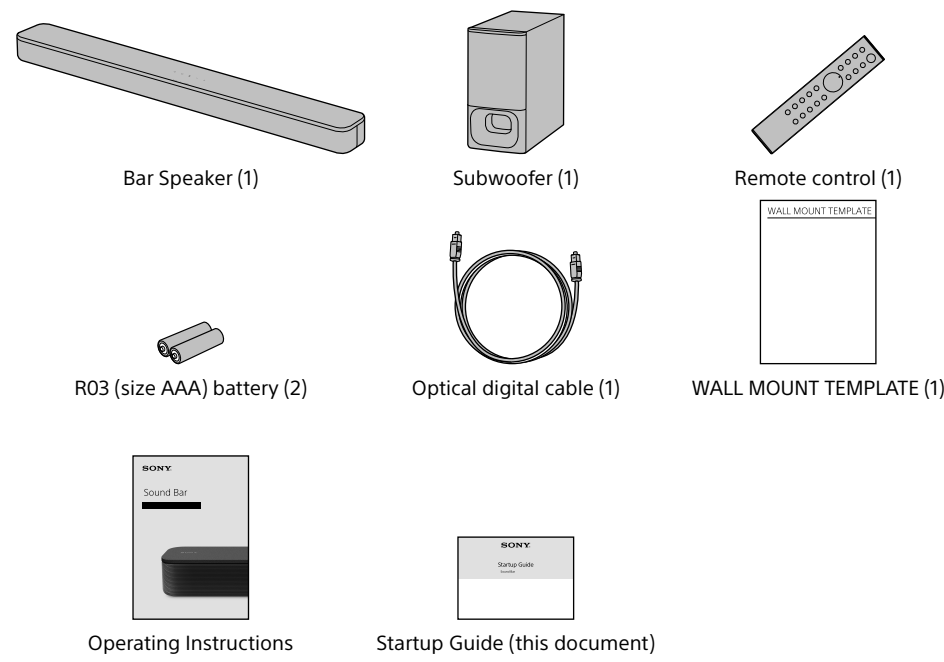
Sound Bar : HT-SD35

To mount the Bar Speaker on a wall
Refer to "Mounting the Bar Speaker on a Wall" in the Operating Instructions (separate document).



* 5 0 0 3 6 4 1 2 1 * (1) 5-003-641-21(1)

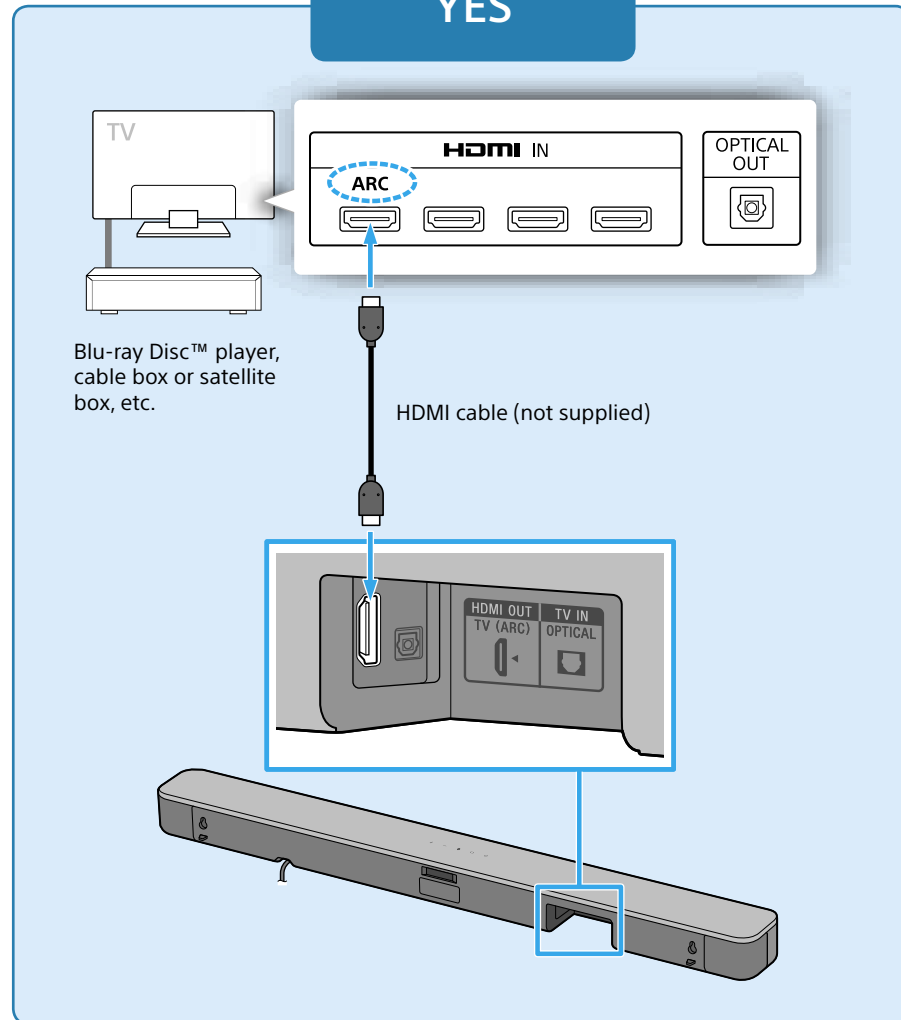
What's in the box



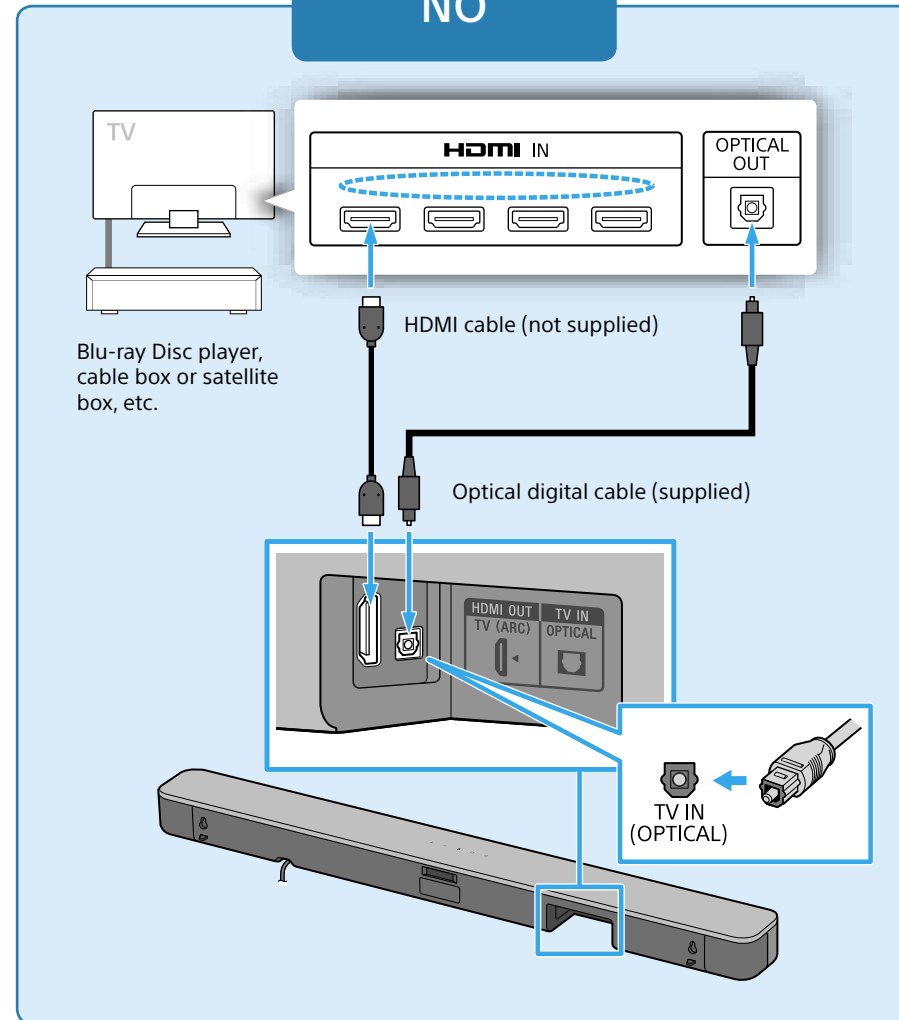
1 Connecting a TV

Are there any HDMI IN jacks labeled "ARC" on your TV?

YES



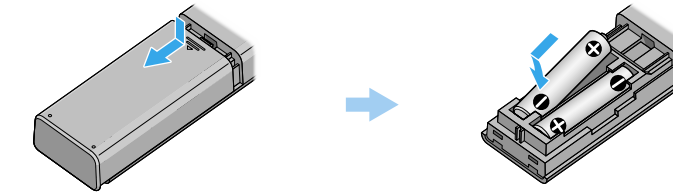
NO



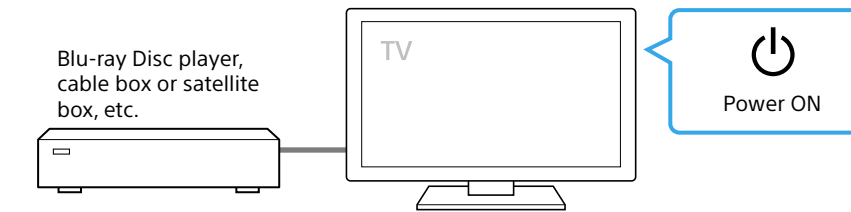
Note

- Make sure that the cable is firmly inserted.
- To use the Control for HDMI function, connect the Bar Speaker and your TV with an HDMI cable (not supplied).
- If you select "YES," enable the Control for HDMI function on the TV. Otherwise, there will be no TV sound output from the Sound Bar.
- If you select "NO," connect the TV and the Bar Speaker with not only an HDMI cable (not supplied), but also the optical digital cable (supplied). Otherwise, there will be no TV sound output from the Sound Bar. Check the shape of the optical digital cable's connectors and the jacks on the TV and the Bar Speaker. Insert the connectors into the jacks in the right directions. If you forcibly insert the connectors in the wrong directions, the connectors and the jacks may be damaged.

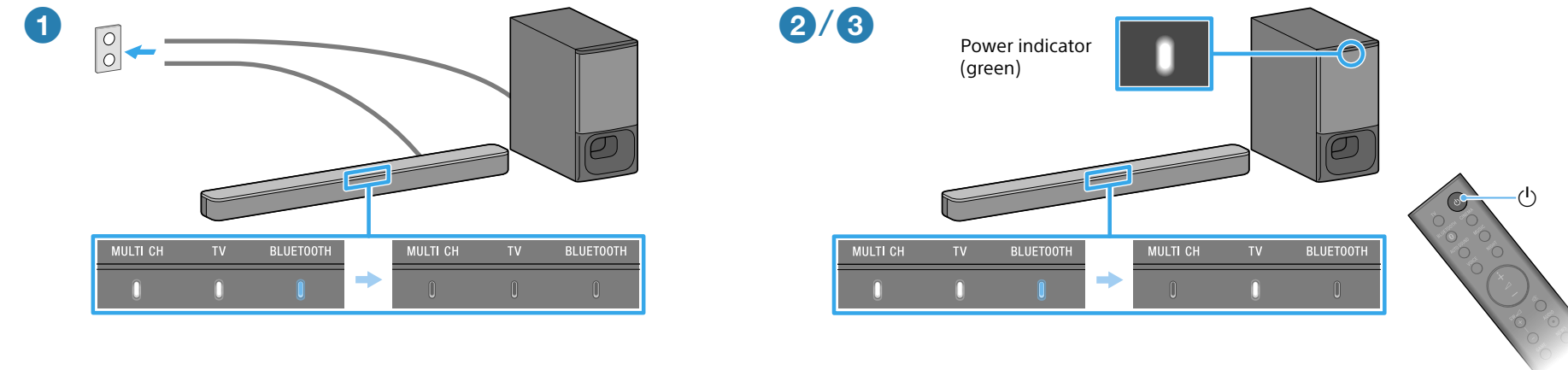
2 Setting up the remote control



3 Turning on the TV



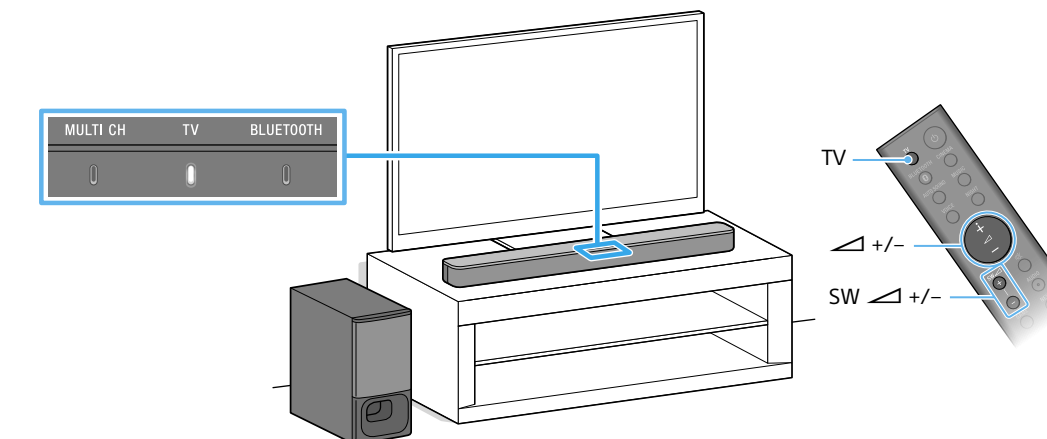
4 Turning on the Sound Bar



- 1 Connect the AC power cords (mains leads) of the Bar Speaker and subwoofer to the AC outlet (mains).
The remote control of the Sound Bar does not work until all the indicators on the Bar Speaker are turned off.
- 2 Press (power) on the remote control of the Sound Bar.
All of the indicators on the Bar Speaker light up in sequence for a few seconds, and then only the TV indicator lights up.
- 3 Confirm that the power indicator of the subwoofer is lit in green.
If the power indicator of the subwoofer is lit in green, the connection with the Bar Speaker is established.
If not, refer to "Subwoofer" of "Troubleshooting" in the Operating Instructions (separate document).

5 Listening to audio

1/2



- 1 Make sure that the TV indicator on the Bar Speaker lights up.
When the TV indicator on the Bar Speaker does not light up, press TV on the remote control of the Sound Bar to select the TV input.
- 2 Adjust the volume by pressing on the remote control of the Sound Bar.
Adjust the subwoofer volume by pressing SW on the remote control of the Sound Bar.

Note

- Depending on the order in which you turn on the TV and the Sound Bar, the Sound Bar may be muted and the MULTI CH and BLUETOOTH indicators flash repeatedly. If this happens, turn on the TV first, and then the Sound Bar.
- Do not place magnetic cards on the Sound Bar or near the Sound Bar.